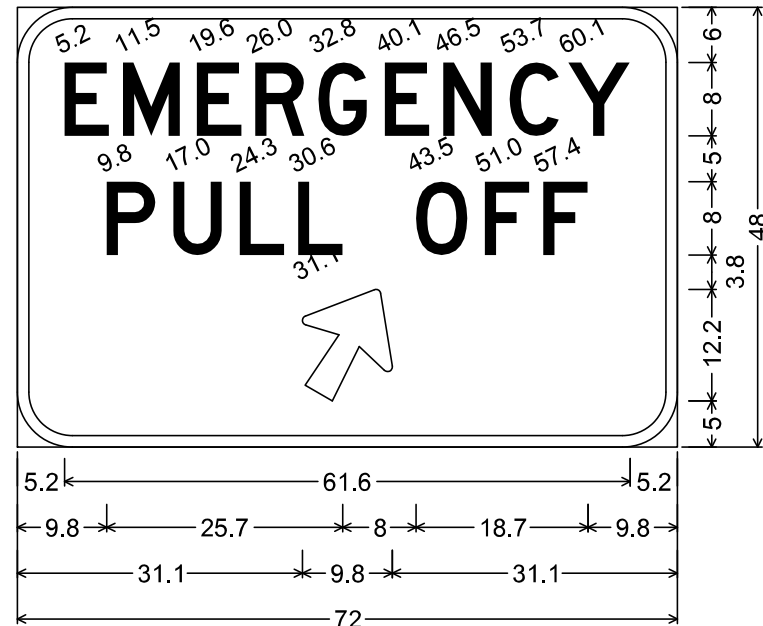
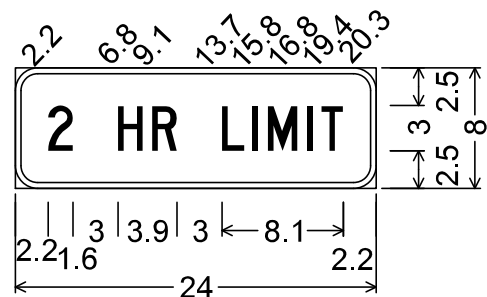


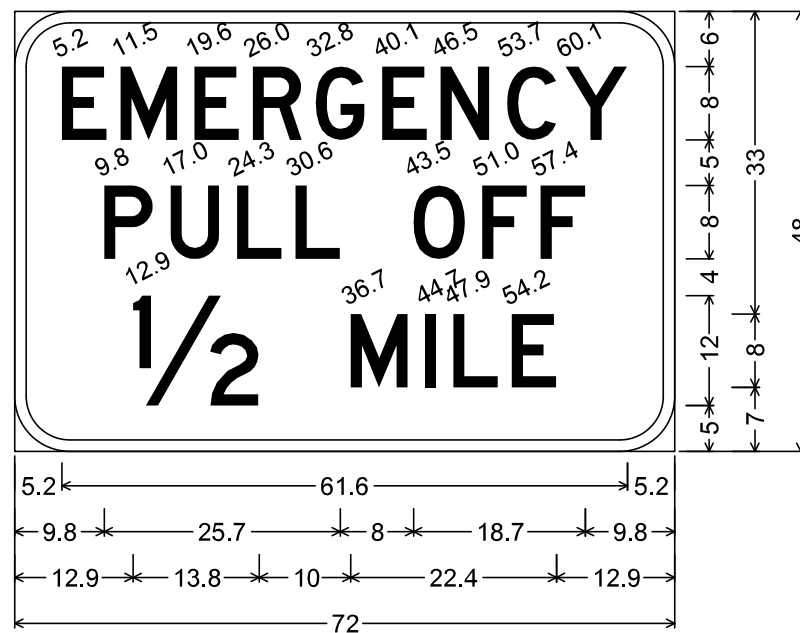
3.0" Radius, 0.5" Border, Black on Orange;
 [EMERGENCY] C; [PULL OFF] C;
 [SITE 1] C;



6.0" Radius, 1.3" Border, Black on Orange;
 [EMERGENCY] D; [PULL OFF] D;
 Arrow 5 - 13.0" 60°;



1.5" Radius, 0.4" Border, Black on Orange;
 [2 HR LIMIT] C;

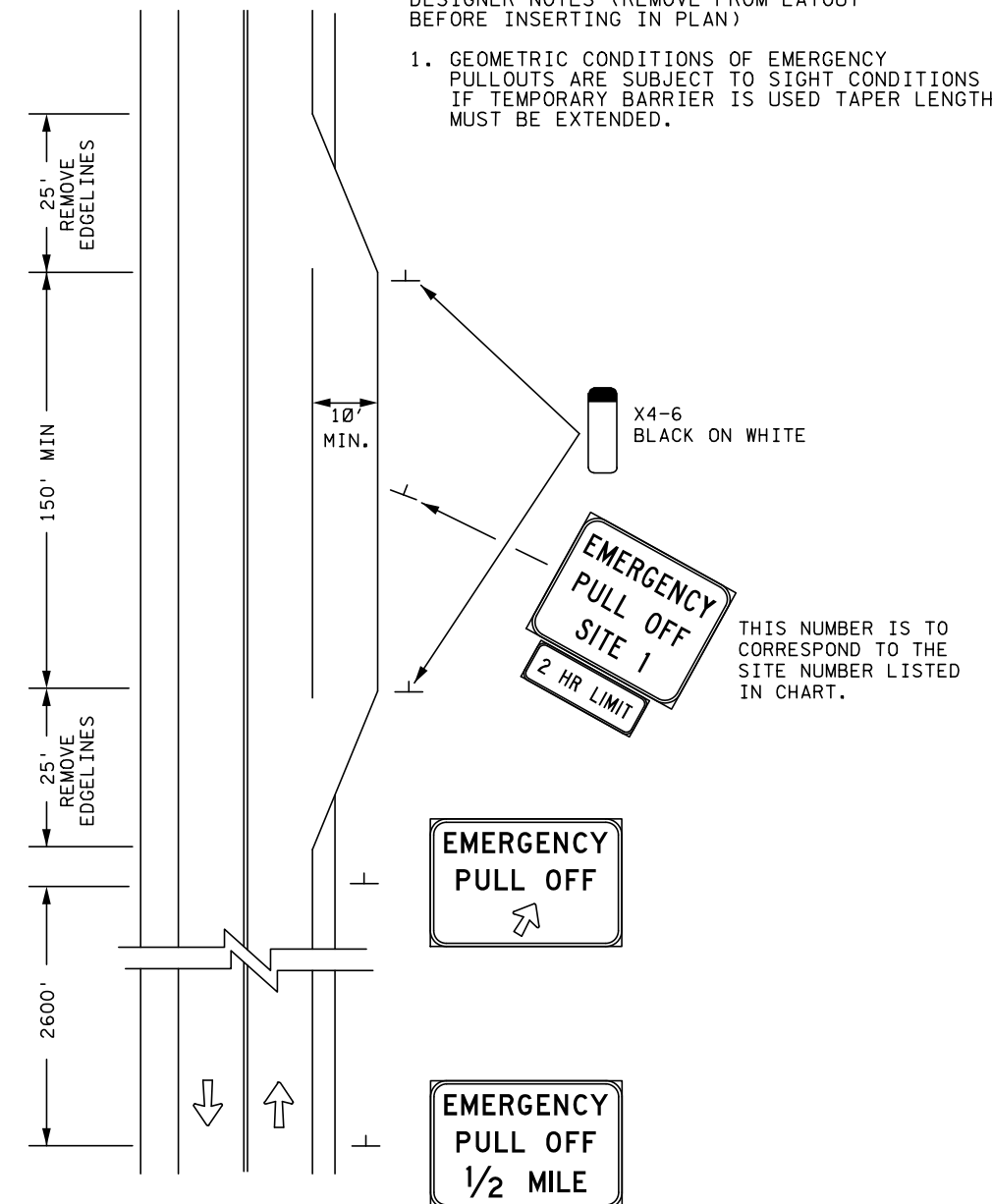


6.0" Radius, 1.3" Border, Black on Orange;
 [EMERGENCY] D; [PULL OFF] D; [1/2 MILE] D;

EMERGENCY PULL OFF		
STAGE	SITE NO.	STA. TO STA.

DESIGNER NOTES (REMOVE FROM LAYOUT BEFORE INSERTING IN PLAN)

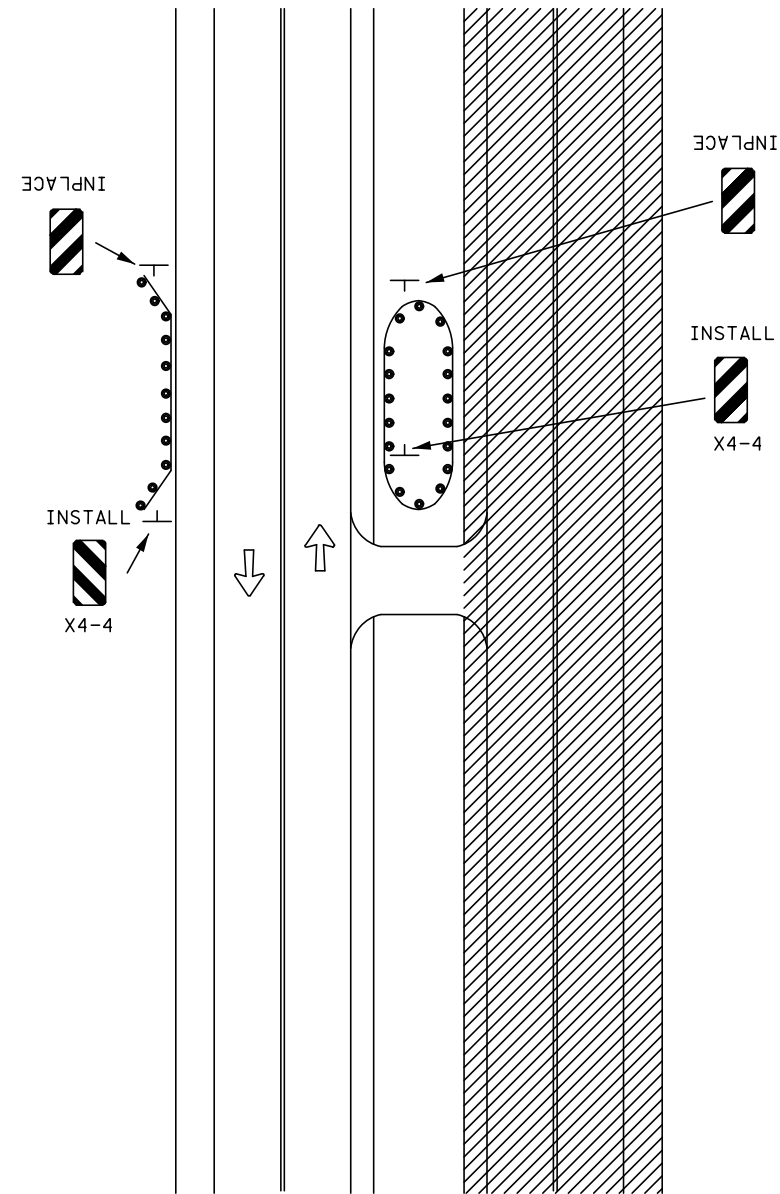
1. GEOMETRIC CONDITIONS OF EMERGENCY PULLOUTS ARE SUBJECT TO SIGHT CONDITIONS IF TEMPORARY BARRIER IS USED TAPER LENGTHS MUST BE EXTENDED.



EMERGENCY PULL OFF

MAY BE USED ON DIVIDED HIGHWAY OR TWO LANE, TWO WAY ROADS WHERE SHOULDERS ARE LESS THAN 6 FEET WIDE AND RESTRICTION CONTINUES FOR MORE THAN 3/4 MILE

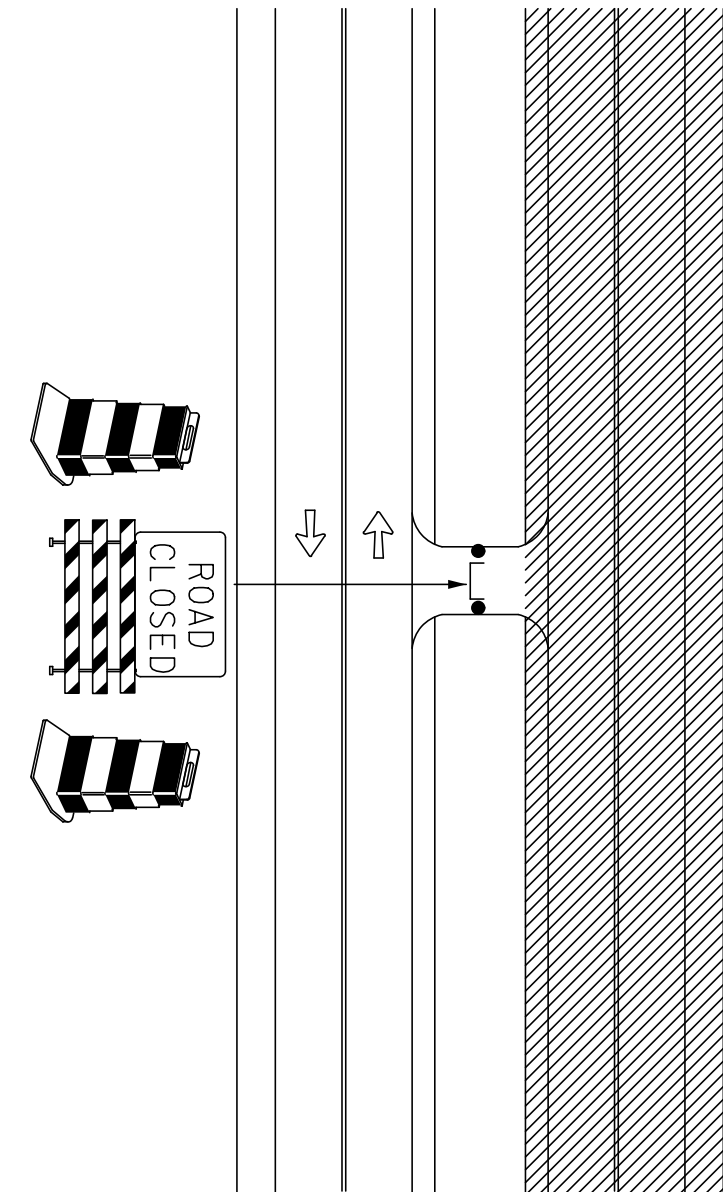
SIGN X4-4		
STAGE	NUMBER OF SIGNS	SIZE



INSTALL OBJECT MARKERS AT OBSTACLES IN THE OPPOSITE DIRECTION OF NORMAL USAGE

OBJECT MARKER PLACEMENT
TWO LANE, TWO WAY OPERATION

STAGE	NUMBER X-OVER



EMERGENCY X-OVER CLOSURE